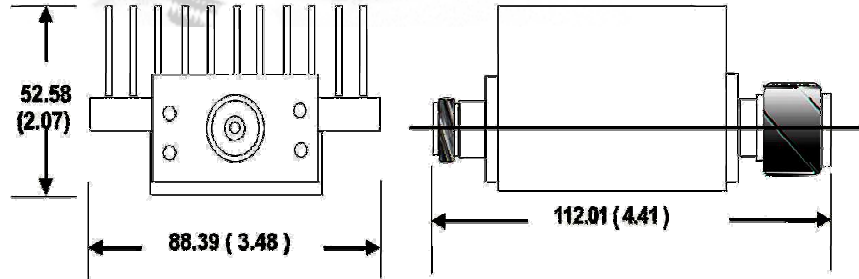
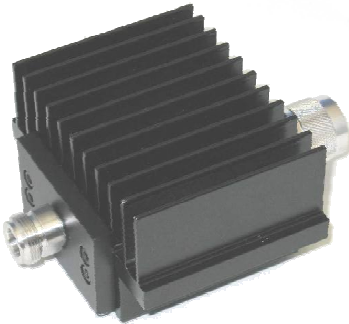


Fixed Coaxial Attenuator High Power

MODEL WA68

DC – 6.0 GHz

100 WATTS



Features

Type N, DIN 7/16 or SMA stainless steel M/F connectors per MIL-STD-348A, interface dimensions mate nondestructively with MIL-PRF-39012. Designed to meet MIL-DTL-3933 environmental specification. Unit may be mounted in any position. Mounting holes provided on bottom of unit.

Specifications

Nominal Impedance: 50 ohms.

Frequency Range: DC - 6.0 GHz.

Nominal dB Values: 1 - 30 dB.

Power Sensitivity: < 0.0005 dB/dB/W;
Unidirectional in power.

Power Rating: 100 watts average. Maximum rated average power to 25°C ambient temperature, derated linearly to 10 watts at 125°C. 10 kilowatt peak (5 µsec pulse width; 0.5% duty cycle).

Temperature Range: -55°C to +125°C.

Temperature Coefficient: < 0.0004 dB/dB/°C.

Standard Nominal Values and Deviations:

Attenuation (dB)	Accuracy ± dB
	DC - 6.0 GHz
1,2	1.20
3,6,10,20,30	1.25

Construction: Black aluminum alloy body with passivated stainless steel connectors. Gold plated beryllium copper contacts.

Calibration: Insertion Loss and VSWR performed across frequency range. Calibration test data available at additional cost.

Maximum VSWR:

Frequency (GHz)	VSWR
DC – 6.0	1.30

Weight:

Type N	1.5 kg/ 3.3 lb.
DIN 7/16	1.7 kg/ 3.7 lb.

Physical Dimensions:

Length:

Connector	Length
Type N	112.1 (4.4)
DIN 7/16	139.7 (5.5)

Width: 89.0 (3.5).

Height: 54.0 (2.1).

Note: Dimensions are given in mm (inches) and are maximum, unless otherwise specified.



WEINSCHTEL ASSOCIATES

TEL: 877.948.8342 / 301.963.4630 ♦ Fax: 301.963.8640

WEB: <http://www.WeinschelAssociates.com>

EMAIL: sales@WeinschelAssociates.com

59

Specification
Subject to change
without notice