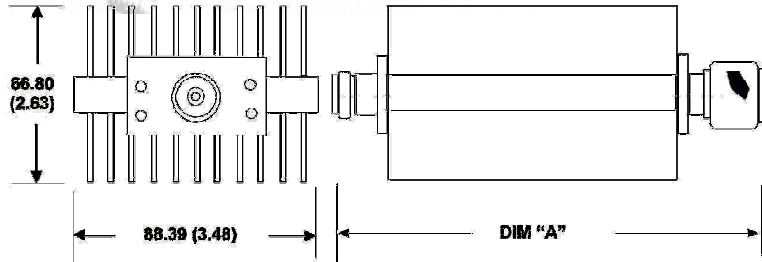
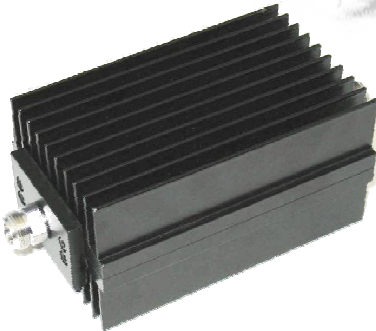


# Fixed Coaxial Attenuator High Power

# MODEL WA57

DC – 5.0 GHz

150 WATTS



## Features

Type N, SMA, or DIN 7/16 stainless steel M/F connectors per MIL-STD-348A, interface dimensions mate nondestructively with MIL-PRF-39012. Designed to meet MIL-DTL-3933 environmental specification. Unit may be mounted in any position.

## Specifications

**Nominal Impedance:** 50 ohms.

**Frequency Range:** DC - 5.0 GHz.

**Nominal dB Values:** 3 - 40 dB

**Standard Nominal Values and Deviations:**

Attenuation (dB)	Deviation ± dB DC - 5.0 GHz	
	WA57	WA57-LIM
3*, 6	1.25	N/A
10, 20	1.25	2.00
30, 40	1.50	3.00

**Maximum VSWR:**

Frequency (GHz)	Input	Output
DC - 2.0 (1.5*)	1.10	1.20 (1.10*)
2.0 - 5.0	1.15	1.20

**Temperature Range:** -55°C to +125°C.

**Temperature Coefficient:** < 0.0004 dB/dB/°C.

**Power Sensitivity:** < 0.0001 dB/dB/W.

**Power Rating:** 150W CW / 10 KW peak; Unidirectional. Full power from -55°C to +25°C.

**Construction:** Black aluminum alloy body with passivated stainless steel connectors.

**Calibration:** Insertion Loss and VSWR performed across frequency range. Calibration test data available at additional cost.

**Physical Dimensions:**

Connector Type	Dim "A"	Weight kg/oz
Type N	174.24 ( 8.86 )	.85/30
SMA	189.89 ( 7.47 )	.79/28
DIN 7/16	265.68 ( 10.46 )	1.02/36

Note: Dimensions are given in mm (inches) and are maximum, unless otherwise specified.



## WEINSCHTEL ASSOCIATES

TEL: 877.948.8342 / 301.963.4630 ♦ Fax: 301.963.8640

WEB: <http://www.WeinschelAssociates.com>

EMAIL: [sales@WeinschelAssociates.com](mailto:sales@WeinschelAssociates.com)

51

Specification  
Subject to change  
without notice