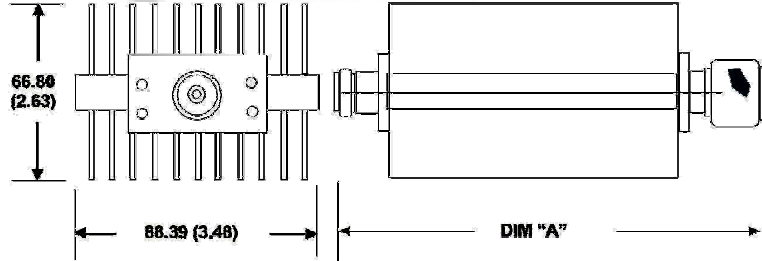
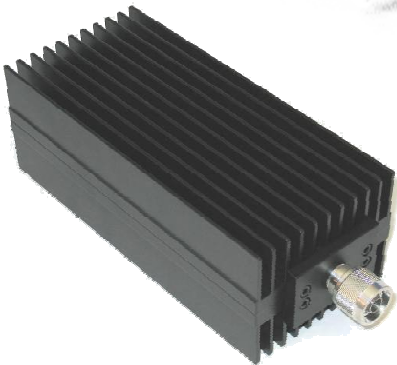


Fixed Coaxial Attenuator High Power

MODEL WA45

DC – 2.5 GHz

250 WATTS



Features

Type N or DIN 7/16 stainless steel M/F connectors per MIL-STD-348A, interface dimensions mate nondestructively with MIL-PRF-39012. Designed to meet MIL-DTL-3933 environmental specification. Unit may be mounted in any position.

Specifications

Nominal Impedance: 50 ohms.

Frequency Range: DC - 2.5 GHz.

Nominal dB Values: 3 - 40 dB.

Power Sensitivity: < 0.0001 dB/dB/W.

Power Rating: 250W CW / 10 Kw peak; Unidirectional. Full power from -55°C to +25°C.

Temperature Range: -55°C to +125°C.

Temperature Coefficient: < 0.0004 dB/dB/°C

Attenuation (dB)	Accuracy ± dB
	DC – 2.5 GHz
3,6,10,10,30,40	0.5

Maximum VSWR:

Frequency (GHz)	VSWR
DC - 2.5	1.10

Construction: Black aluminum alloy body with passivated stainless steel connectors.

Calibration: Insertion Loss and VSWR performed across frequency range. Calibration test data available at additional cost.

Physical Dimensions & Weight:

Connector Type	Dim "A"	Weight kg/oz
Type N	235.71 (9.28)	1.54 kg/ 3.4 lbs
DIN 7/16	276.35 (10.88)	1.72 kg/ 3.8 lbs

Note: Dimensions are given in mm (inches) and are maximum, unless otherwise specified.



WEINSCHTEL ASSOCIATES

TEL: 877.948.8342 / 301.963.4630 ♦ Fax: 301.963.8640

WEB: <http://www.WeinschelAssociates.com>

EMAIL: sales@WeinschelAssociates.com