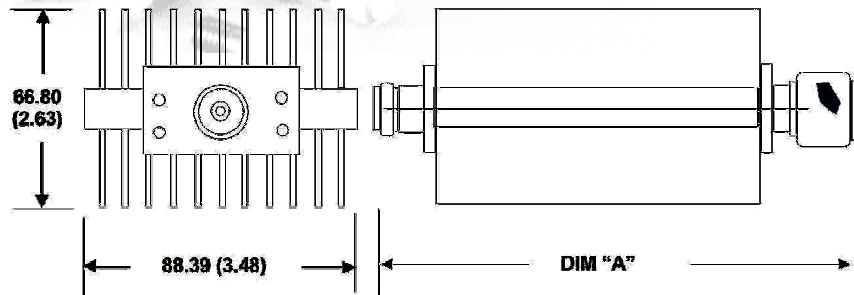
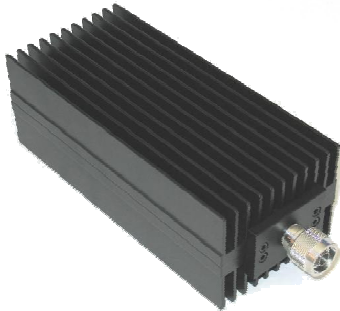


Fixed Coaxial Attenuator High Power

MODEL WA38

DC – 5.0 GHz

300 WATTS



Features

Type N or DIN 7/16 stainless steel M/F connectors per MIL-STD-348A, interface dimensions mate nondestructively with MIL-PRF-39012. Designed to meet MIL-DTL-3933 environmental specification.

Specifications

Nominal Impedance: 50 ohms.

Frequency Range: DC - 5.0 GHz.

Nominal dB Values: 10 - 40 dB.

Power Sensitivity: < 0.0001 dB/dB/W;
Unidirectional in power.

Power Rating: 300 watt CW/ 10KW peak.
Maximum rated average power to 25°C ambient temperature, derated linearly to 25 watts at 125°C. 10 kilowatt peak (5 µsec pulse width; 1.5% duty cycle).

Temperature Range: -55°C to +125°C.

Temperature Coefficient: < 0.0004 dB/dB/°C.

Standard Nominal Values and Deviations:

Attenuation (dB)	Accuracy ± dB	
	DC - 2.0 GHz	2.0 - 5.0 GHz
10,20,30	0.4	0.75
40	0.5	1.0

Construction: Black aluminum alloy body with passivated stainless steel connectors. Gold plated beryllium copper contacts.

Calibration: Insertion Loss and VSWR performed across frequency range. Calibration test data available at additional cost.

Maximum VSWR:

Frequency (GHz)	VSWR
DC – 2.0	1.25
2.0 - 5.0	1.45

Weight: 1.28 kg/ 2.75 lbs.

Length: 233.93 (9.21).

Width: 79.45 (3.13).

Height: 50.55 (1.99).

Note: Dimensions are given in mm (inches) and are maximum ± .05 in., unless otherwise specified.



WEINSCHEL ASSOCIATES

TEL: 877.948.8342 / 301.963.4630 ♦ Fax: 301.963.8640

WEB: <http://www.WeinschelAssociates.com>

EMAIL: sales@WeinschelAssociates.com

35

Specification
Subject to change
without notice