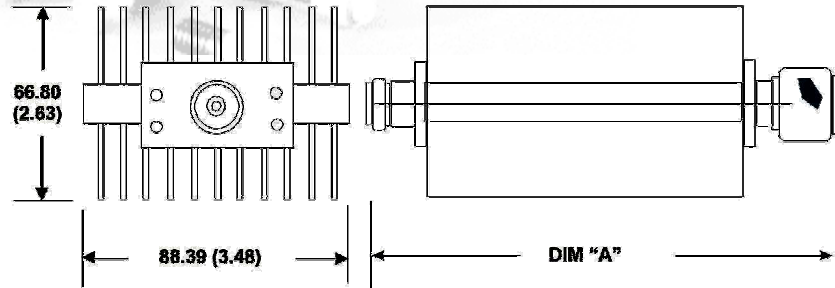
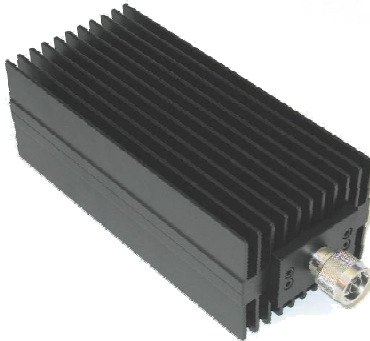


# Fixed Coaxial Attenuator High Power

# MODEL WA36

DC – 8.5 GHz

300 WATTS



## Features

Type N or 7/16 stainless steel M/F connectors per MIL-STD-348A, interface dimensions mate nondestructively with MIL-PRF-39012. Designed to meet MIL-DTL-3933 environmental specification.

## Specifications

**Nominal Impedance:** 50 ohms.

**Frequency Range:** DC - 8.5 GHz.

**Nominal dB Values:** 10 - 40 dB.

**Power Sensitivity:** < 0.0001 dB/dB/W;  
Unidirectional in power.

**Power Rating:** 300 watt CW/ 5KW peak. Maximum rated average power to 25°C ambient temperature, derated linearly to 25 watts at 125°C. 5 kilowatt peak (5 µsec pulse width; 1.5% duty cycle).

**Temperature Range:** -55°C to +125°C.

**Temperature Coefficient:** < 0.0004 dB/dB/°C

**Maximum VSWR:**

Frequency (GHz)	VSWR
DC - 4.0	1.30
4.0 – 8.5	1.45

## Standard Nominal Values and Deviations:

Attenuation (dB)	Accuracy ± dB
	DC - 8.5 GHz
10,20,30	0.75
40	1.0

**Construction:** Black aluminum alloy body with passivated stainless steel connectors. Gold plated beryllium copper contacts.

**Calibration:** Insertion Loss and VSWR performed across frequency range. Calibration test data available at additional cost.

**Weight:** 1.28 kg/ 2.75 lbs.

**Length:** 233.93 (9.21).

**Width:** 79.45 (3.13).

**Height:** 50.55 (1.99).

Note: Dimensions are given in mm (inches) and are maximum ± .05 in., unless otherwise specified.



## WEINSCHEL ASSOCIATES

TEL: 877.948.8342 / 301.963.4630 ♦ Fax: 301.963.8640

WEB: <http://www.WeinschelAssociates.com>

EMAIL: [sales@WeinschelAssociates.com](mailto:sales@WeinschelAssociates.com)

33

Specification  
Subject to change  
without notice