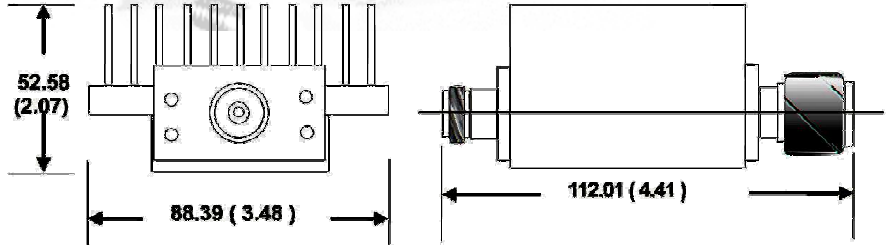
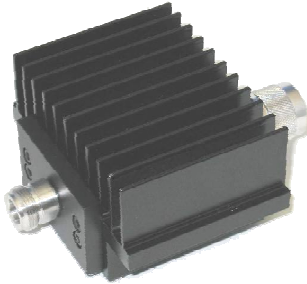


# Fixed Coaxial Attenuator High Power

# MODEL WA30

DC – 4.0 GHz

100 WATTS



## Features

Type N, SMA or DIN 7/16 stainless steel M/F connectors per MIL-STD-348A, interface dimensions mate nondestructively with MIL-C-9012. Designed to meet MIL-DTL-3933 environmental specification. Unit may be mounted in any position.

## Specifications

**Nominal Impedance:** 50 ohms.

**Frequency Range:** DC - 4.0 GHz.

**Nominal dB Values:** 3 - 40 dB.

**Power Sensitivity:** < 0.005 dB/dB/W;  
Unidirectional in power.

**Power Rating:** 100 watts average. Maximum rated average power to 25°C ambient temperature, derated linearly to 15 watts at 125°C. 5 kilowatt peak (5 µsec pulse width; 0.5% duty cycle).

**Temperature Range:** -55°C to +125°C.

**Temperature Coefficient:** < 0.0004 dB/dB/°C.

**Standard Nominal Values and Deviations:**

Attenuation (dB)	Accuracy ± dB
	DC – 4.0 GHz
3,6,10,20	0.4
30, 40	0.6

**Construction:** Black aluminum alloy body with passivated stainless steel connectors. Gold plated beryllium copper female contact, stainless steel male contact.

**Calibration:** Insertion Loss and VSWR performed across frequency range. Calibration test data available at additional cost.

**Maximum VSWR:**

Frequency (GHz)	VSWR
DC – 4.0	1.20

**Weight:**

Type N	1.5 kg/ 3.3 lb.
SMA	1.3 kg/ 3.0 lb.
DIN 7/16	1.7 kg/ 3.7 lb.

**Physical Dimensions:**

**Length:**

Connector	Length
Type N	112.01 (4.41)
SMA	97.41 (3.84)

**Width:** 89.0 (3.5).

**Height:** 54.0 (2.1).

Note: Dimensions are given in mm (inches) and are maximum, unless otherwise specified



## WEINSCHTEL ASSOCIATES

TEL: 877.948.8342 / 301.963.4630 ♦ Fax: 301.963.8640

WEB: <http://www.WeinschelAssociates.com>

EMAIL: [sales@WeinschelAssociates.com](mailto:sales@WeinschelAssociates.com)

24

Specification  
Subject to change  
without notice