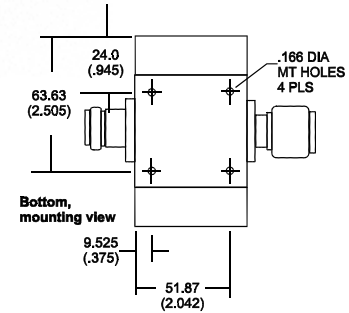
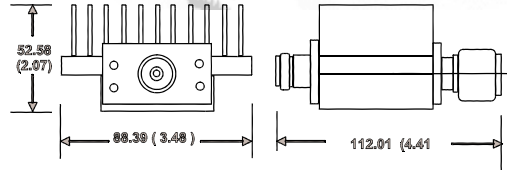
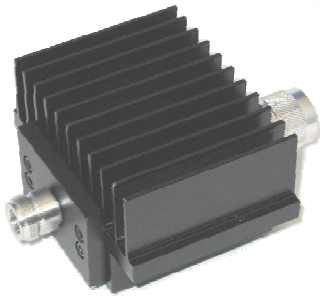


Fixed Coaxial Attenuator High Power

MODEL WA29

DC – 8.5 GHz

75 WATTS



Features

Type N, SMA or DIN 7/16 stainless steel M/F connectors per MIL-STD-348A, interface dimensions mate nondestructively with MIL-PRF-39012. Designed to meet MIL-DTL-3933 environmental specification. Unit may be mounted in any position.

Specifications

Nominal Impedance: 50 ohms.

Frequency Range: DC - 8.5 GHz.

Nominal dB Values: 3 - 40 dB.

Power Sensitivity: < 0.005 dB/dB/W;
Unidirectional in power.

Power Rating: 75 watts average. Maximum rated average power to 25°C ambient temperature, de-rated linearly to 15 watts at 125°C. 5 kilowatt peak (5 µsec pulse width; 1.5% duty cycle).

Temperature Range: -55°C to +125°C.

Temperature Coefficient: < 0.0004 dB/dB/°C

Standard Nominal Values and Deviations:

Attenuation (dB)	Accuracy ± dB	
	DC - 4.0 GHz	4.0 - 8.5 GHz
3,6,10,20	0.4	0.75
30,40	0.6	1.0

Construction: Black aluminum alloy body with passivated stainless steel connectors. Gold plated beryllium copper female contact, stainless steel male contact.

Calibration: Insertion Loss and VSWR performed across frequency range. Calibration test data available at additional cost.

Maximum VSWR:

Frequency (GHz)	VSWR
DC – 4.0	1.20
4.0 – 8.5	1.30

Weight:

Type N	1.5 kg/ 3.3 lb.
SMA	1.3 kg/ 3.0 lb.
DIN 7/16	1.7 kg/ 3.7 lb.

Physical Dimensions:

Length:

Connector	Length
Type N	112.01 (4.41)
SMA	97.41 (3.84)

Width: 89.0 (3.5)

Height: 54.0 (2.1)

Note: Dimensions are given in mm (inches) and are maximum, unless otherwise specified.



WEINSCHEL ASSOCIATES

TEL: 877.948.8342 / 301.963.4630 ♦ Fax: 301.963.8640

WEB: <http://www.WeinschelAssociates.com>

EMAIL: sales@WeinschelAssociates.com

23

Specification
Subject to change
without notice