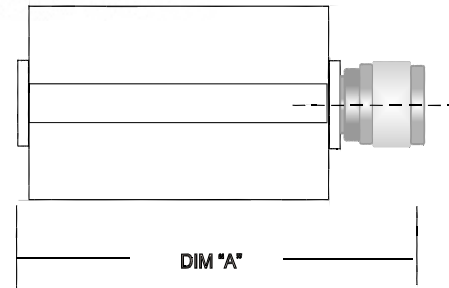
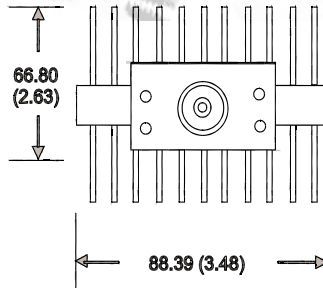
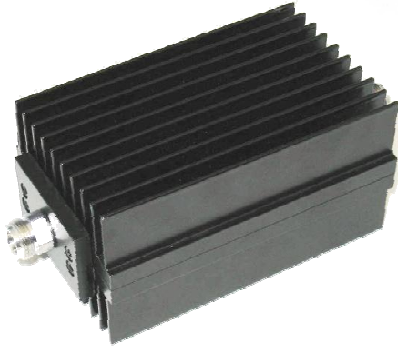


TERMINATION

MODEL WA1428

DC – 2.5 GHz

150 WATTS



Model WA1428-3 shown

Features

Type N, SMA, or DIN 7/16 stainless steel M/F connectors per MIL-STD-348A, interface dimensions mate nondestructively with MIL-PRF-39012. Designed to meet MIL-DTL-39030 environmental specification. Unit may be mounted in any position.

Specifications

Nominal Impedance: 50 ohms

Frequency Range: DC - 2.5 GHz

Power Rating: 150W CW / 10 KW peak. Full power from -55°C to +25°C; derated linearly to 15 Watts at 125°C.

Temperature Range: -55°C to +125°C

Calibration: VSWR performed across frequency range. Calibration test data available at additional cost.

Construction: Black aluminum alloy body with passivated stainless steel connectors.

Maximum VSWR:

Frequency (GHz)	VSWR
DC - 1.5	1.10
1.5 - 2.5	1.20

Physical Dimensions:

Length and Weight:

Connector Type	Dim "A"	Weight kg/lb
N F WA1428-3	144.78 (5.70)	1.13/2.5
N M WA1428-4	152.90 (6.02)	1.13/2.5
7/16 F WA1428-8	177.80 (7.00)	1.22/2.7
7/16 M WA1428-9	178.82 (7.04)	1.25/2.75

Note: Dimensions are given in mm (inches) and are maximum, unless otherwise specified.



WEINSCHEL ASSOCIATES

TEL: 877.948.8342 / 301.963.4630 ♦ Fax: 301.963.8640

WEB: <http://www.WeinschelAssociates.com>

EMAIL: sales@WeinschelAssociates.com