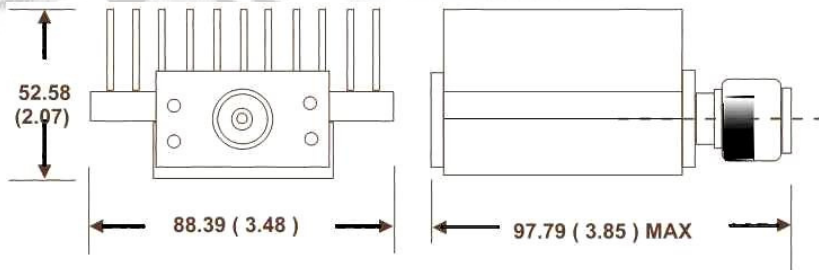
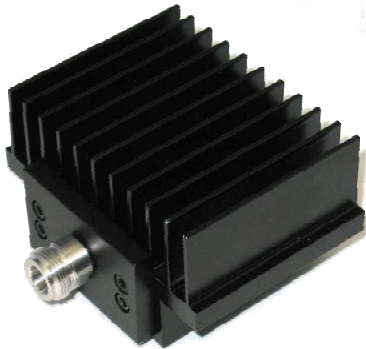


# TERMINATION

# MODEL WA1422

DC – 4.0 GHz

75 WATTS



## Features

Type N, SMA or DIN 7/16 stainless steel M/F connectors per MIL-STD-348A, interface dimensions mate nondestructively with MIL-PRF-39012. Designed to meet MIL-DTL-39030 environmental specifications. Unit may be mounted in any position.

## Specifications

**Nominal Impedance:** 50 ohms

**Frequency Range:** DC - 4.0 GHz

**Power Rating:** 75 watts average. Maximum rated average power to 25°C ambient temperature, de-rated linearly to 15 watts at 125°C. 5 kilowatt peak (5 µsec pulse width; 1.5% duty cycle).

**Temperature Range:** -55°C to +125°C

**Construction:** Black aluminum alloy body with passivated stainless steel connectors. Gold plated beryllium copper female contact, stainless steel or gold-plated beryllium copper male contact.

**Maximum VSWR:**

Frequency (GHz)	VSWR
DC – 4.0	1.20

**Calibration:** VSWR performed across frequency range. Calibration test data available at additional cost.

**Physical Dimensions:**

**Length:**

Connector	Length
Type N	97.79 (3.85)
SMA	89.31 (3.52)

**Width:** 89.0 (3.5)

**Height:** 53.0 (2.1)

**Weight:**

Type N	1.5 kg/ 3.3 lb.
SMA	1.3 kg/ 3.0 lb.

Note: Dimensions are given in mm (inches) and are maximum, unless otherwise specified.



## WEINSCHEL ASSOCIATES

TEL: 877.948.8342 / 301.963.4630 ♦ Fax: 301.963.8640

WEB: <http://www.WeinschelAssociates.com>

EMAIL: [sales@WeinschelAssociates.com](mailto:sales@WeinschelAssociates.com)