

DC – 13.0 GHz

0.3 WATTS

## Overview

The DA Series of Digital Attenuators represents the latest in programmable attenuator technology. The DA Series combines the rugged design and superior performance that comes standard with Weinschel Associates products with modern innovations to achieve new levels of ease of integration and price performance.

The DA Series is ideal for a multitude of applications including:

- Test Instrumentation
- Base Station Infrastructure
- Broadband Telecommunications
- Microwave and VSAT Radios
- Military

## Features

- Broadband Frequency Coverage
- High Accuracy and Repeatability
- Easy Programmability
  - USB Interface
  - Software Driver/Application
- Rugged Construction

## Specifications

Frequency Range: DC - 13.0 GHz

### Attenuation Range:

Model DA13-30:	30 dB
Model DA13-60:	60 dB
Model DA13-90:	90 dB

Step Size: 0.5 dB

### Insertion Loss (max):

Model	Insertion Loss vs Freq (GHz)		
	DC – 4	4 – 8	8 – 13
DA13-30	4.0	5.0	6.0
DA13-60	8.0	10.0	12.0
DA13-90	12.0	15.0	18.0

VSWR (max): 1.50:1

Accuracy: ± 0.5 dB Typical

Switching Speed: <100 ns

Input power for 0.1 dB Compression: +22 dBm

Input Third Order Intercept Point: +32 dBm

Power Rating: 0.3 Watt CW, +25 dBm max

Phase Shift with Change in Attenuation:  
1° / dB x f (GHz) maximum

### Temperature:

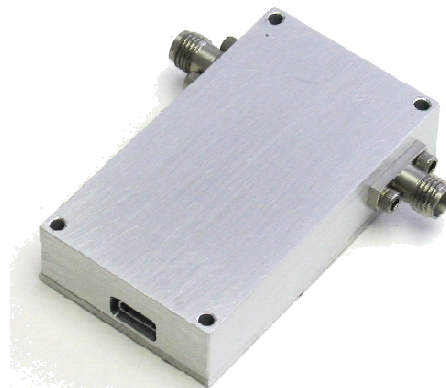
Operating: -55 to + 85 °C  
Storage: -60 to +125 °C

Connectors: SMA stainless steel M/F connectors per MIL-STD-348A, interface dimensions mate nondestructively with MIL-C-39012.

### Programming Interface:

Options: USB-2.0 (standard)  
RS-232  
802.11g Wireless  
Manual Control  
Software: LabView Driver  
Standalone Program

Input Power Requirement: Powered via USB  
Options: AC Power Adapter  
EMI Feedthru



## WEINSCHEL ASSOCIATES

TEL: 877.948.8342 / 301.963.4630 ♦ Fax: 301.963.8640

WEB: <http://www.WeinschelAssociates.com>

EMAIL: [sales@WeinschelAssociates.com](mailto:sales@WeinschelAssociates.com)